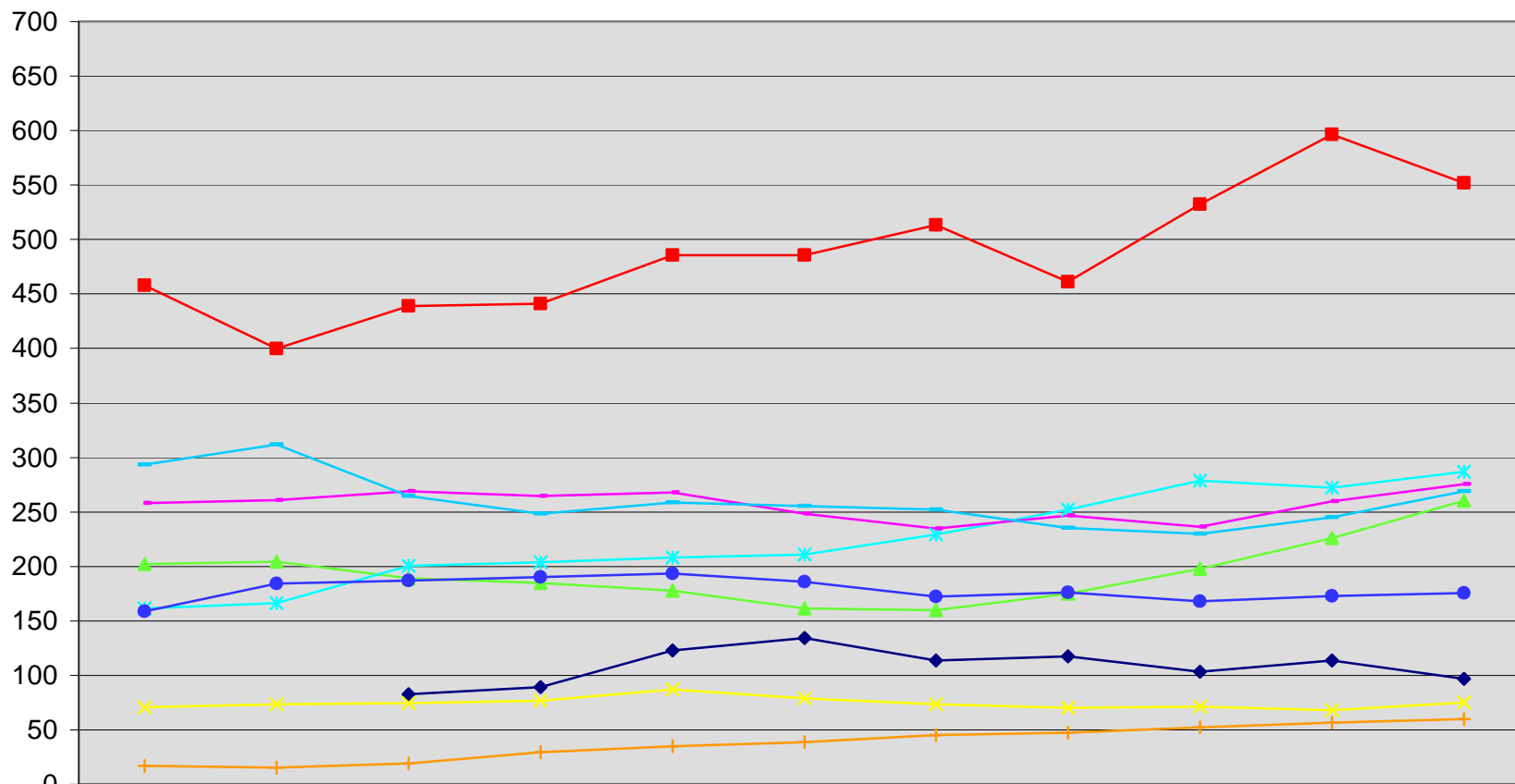
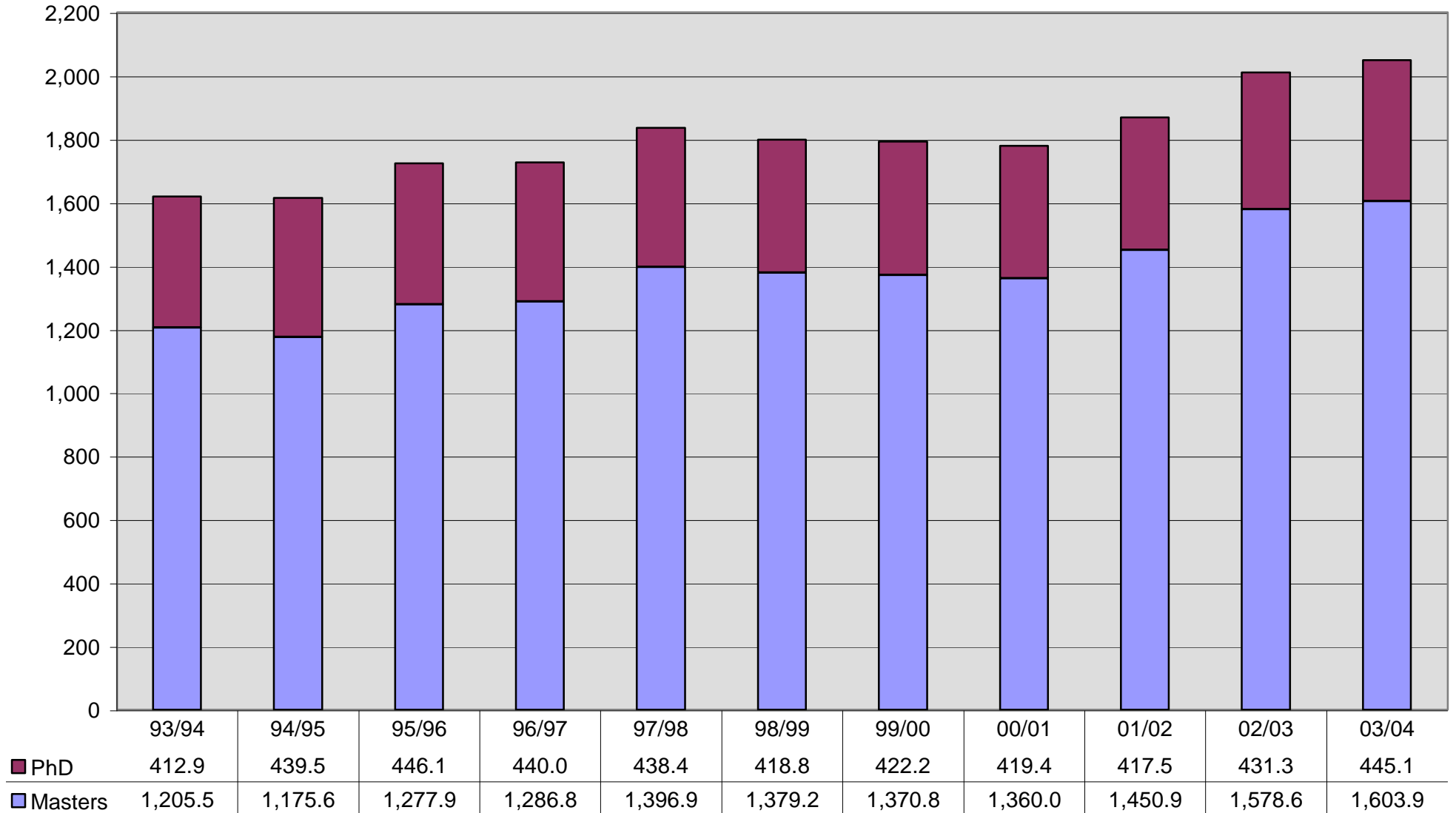


# Annualized Graduate EET - UVic



	93/94	94/95	95/96	96/97	97/98	98/99	99/00	00/01	01/02	02/03	03/04
◆ Total - Business			82.8	89.1	122.8	133.9	113.5	117.0	103.3	113.7	96.5
■ Total - Education	457.6	399.5	438.6	441.1	485.7	485.4	513.3	461.0	532.0	596.2	551.8
▲ Total - Engineering	202.1	204.3	188.8	184.5	177.7	161.2	159.6	174.6	197.8	225.7	259.9
✕ Total - Fine Arts	70.7	73.3	74.2	76.5	87.0	78.9	73.1	69.9	71.1	68.1	74.8
✧ Total - Hum. & Soc. Dev.	161.1	166.3	200.3	203.7	207.8	210.9	229.2	252.2	278.7	272.2	286.9
● Total - Humanities	158.7	184.0	187.0	189.8	193.4	185.5	172.4	175.7	167.6	172.6	175.2
+ Total - Interdisciplinary	17.0	15.3	18.9	29.2	34.5	38.8	44.9	47.0	51.9	56.6	59.5
◆ Total - Science	257.9	260.9	268.8	264.3	267.8	248.1	234.8	246.6	236.4	259.6	275.3
◆ Total - Social Sciences	293.3	311.5	264.5	248.4	258.6	255.4	252.2	235.3	229.5	245.2	269.1

# Annualized Graduate Equivalent Enrolments Taught (EET) UVic



Source: RegStats (ARAI Table 2)  
University of Victoria

Institutional Planning & Analysis  
April 20, 2004